

# CLAYTON

TRUSTED PLANT PROTECTION SOLUTIONS

FUNGICIDE

F

## Clayton Creed™

**A flexible use, broad spectrum fungicide for use in a wide range of crops.**

A mainstay for disease control in Carrots, Pulses, Fruit, Veg and Speciality crops with a wide label of approved crops plus useful additional EAMUs (extensions of authorisation for minor use) in other crops for added flexibility.

**37.5 % w/w cyprodinil and 25 % w/w fludioxonil**  
**WDG (water dispersible granule)**  
**MAPP: 19461**

SCAN



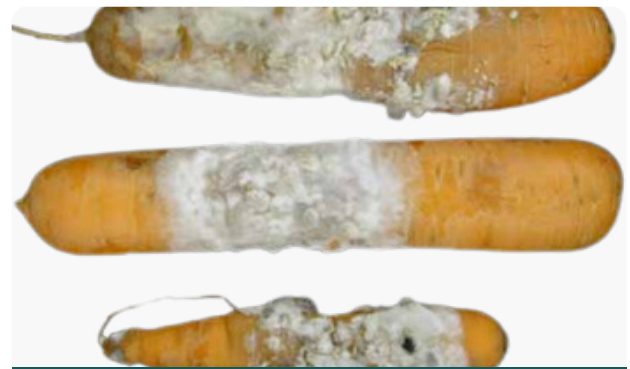
*\*Please refer to the product label for full range of diseases controlled in each approved crop.*

**Clayton Creed** is an effective, specialised co-formulation containing cyprodinil and fludioxinil, for broad spectrum disease control in a range of fruit, vegetable and ornamental crops.

As a highly versatile and cost-effective option for specialist growers, Clayton Creed is another high-quality product from Clayton’s expanding range of generic products.

**KEY FEATURES**

- ⊕ Locally systemic and protectant disease control
- ⊕ Resistance management from two modes of action
- ⊕ Extremely wide range of on-label crops
- ⊕ Wide and growing range of additional EAMUs in many speciality crops
- ⊕ Control of Sclerotinia and Alternaria leaf blight in Carrots



*\*Image courtesy of AHDB*

**QUICK REFERENCE PRODUCT SUMMARY: LABEL APPROVED USES**

Crop	Max individual dose (kg product/ha)	Max number of treatments	Latest time of application (days before harvest)
Apple, crab apple, pear & quince	0.8	3 per year	3
Blueberry, bilberry, cranberry, redcurrant, blackcurrant, gooseberry (outdoor)	1	3 per year	10
Raspberry & blackberry	1	3 per year	14
Strawberry	1	2 per crop	3
Broad bean & dwarf French bean (harvested dry) combining pea	1	2 per crop	28
Broad bean, dwarf French bean & runner bean	1	2 per crop	14
Vining pea & edible podded pea	1	2 per crop	14
Carrots	1	3 per year	7
Celeriac	1	2 per year	14
Ornamental plant production & forestry nursery (outdoor)	1	3 per year	-
Ornamental plant production & forestry nursery (protected)	0.8	3 per year	-

\*Please refer to the product label for full range of diseases controlled in each approved crop.

## EXTENSION OF AUTHORISATION FOR MINOR USES EAMU'S

### **EAMU 20232432 for control of Sclerotinia, Alternaria**

Beetroot, horseradish, parsley root, parsnip, salsify (all Outdoor), ginger, ginseng root, liquorice, other roots of dried herbal infusions, other spice roots, turmeric, valerian root.

### **EAMU 20232433 for control of Botrytis spp.**

Outdoor salad onion

### **EAMU 20232434 for control of Botrytis spp.**

Chicory in forcing sheds, outdoor bulb onion, outdoor garlic, outdoor shallot

### **EAMU 202324345 for control of Basal rot (Fusarium spp.)**

Ornamental bulbs

### **EAMU 202324346 for control of Basal rot Anthracnose spp., Botrytis**

Protected blueberry

### **EAMU 202324347 for control of Botrytis spp.**

Outdoor grapevines

### **EAMU 202324348 for control of Botrytis spp., Rhizopus, Blossom wilt (Monolina)**

Outdoor apricot, outdoor cherry, outdoor peach, outdoor plum

**Note:** Use of products including Clayton Creed under EAMUs is entirely at the growers risk. The grower must read the EAMU (available from the CRD website) in full and retain a hard copy.

### Find out more

For further information about this product and our full product range please scan the QR code or visit our website.



[info@claytonpp.com](mailto:info@claytonpp.com)



[www.claytonpp.com](http://www.claytonpp.com)

SCAN



*\*Information in this Product Sheet does not constitute a recommendation, it is for guidance only. Full information can be found on our website [claytonpp.com](http://claytonpp.com). Clayton Creed is a trademark of Clayton Plant Protection. Use fungicides safely. Always read the label and product information before use.*