

# CLAYTON



## Clayton Creed<sup>®</sup>

FUNGICIDE

F

The mainstay for  
**disease control** in  
carrots and other  
speciality crops.



Discover more at [claytonpp.com](https://claytonpp.com)

### Product overview

A co-formulation of cyprodinil and fludioxinil for the control of a broad spectrum of diseases in fruit, vegetable and ornamental crops.

### Key features

- ✓ Locally systemic and protectant disease control
- ✓ Resistance management from two modes of action
- ✓ Wide range of on-label crops
- ✓ Control of Sclerotinia and Alternaria leaf blight in carrots
- ✓ Formulated in the UK to the highest quality

MAPP number:	19461
Active ingredients:	37.5 % w/w cyprodinil and 25 % w/w fludioxonil
Formulation type:	WDG (water dispersible granule)

Crop	Max individual dose (kg product/ha)	Max number of treatments	Latest time of application (days before harvest)
Apple, crab apple, pear & quince	0.8	3 per year	3
Blueberry, bilberry, cranberry, redcurrant, blackcurrant, gooseberry (outdoor)	1	3 per year	10
Raspberry & blackberry	1	3 per year	14
Strawberry	1	2 per crop	3
Broad bean & dwarf French bean (harvested dry) combining pea	1	2 per crop	28
Broad bean, dwarf French bean & runner bean	1	2 per crop	14
Vining pea & edible podded pea	1	2 per crop	14
Carrots	1	3 per year	7
Celeriac	1	2 per year	14
Ornamental plant production & forestry nursery (outdoor)	1	3 per year	-
Ornamental plant production & forestry nursery (protected)	0.8	3 per year	-

FIND OUT MORE

For further information on this product and our full product range please scan the QR code or visit our website.



[www.claytonpp.com](http://www.claytonpp.com)

SCAN

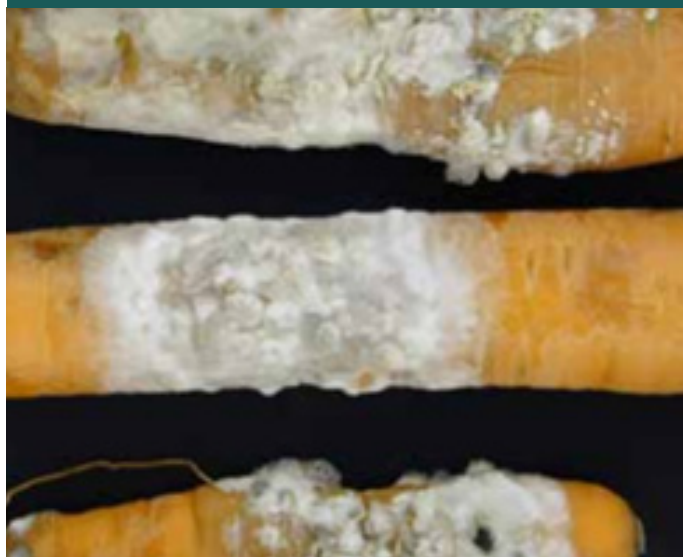


## CARROT FOCUS

### SCLEROTINIA

- White 'cotton wool' mycelium containing black sclerotia, generally seen in late summer and autumn on dead leaves in contact with the soil.
- Affected canopy collapses and forms a mat on the soil surface.
- Symptoms are brown water soaked lesions or a soft rot on the crown or side of root, sometimes with black sclerotia attached to the root surface.
- The main foliar disease issue during early canopy development.

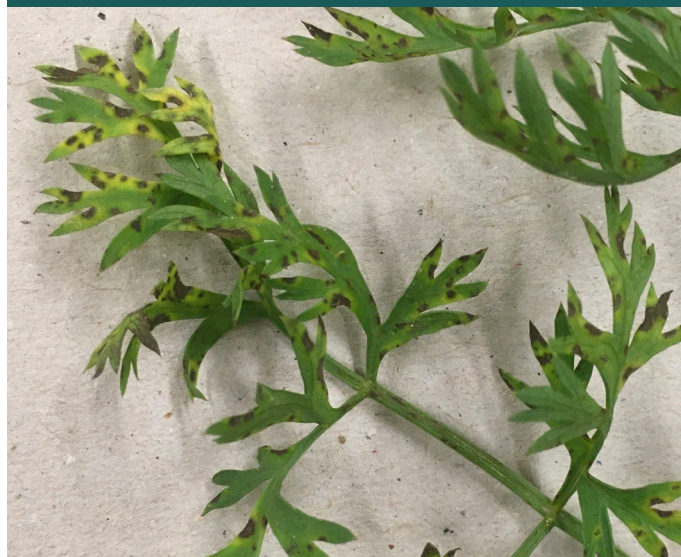
*\*Image courtesy of AHDB*



### ALTERNARIA LEAF BLIGHT

- Can be seed borne and cause seedling death.
- Dark brown lesions and sometimes a yellow halo on individual leaflets, especially on older leaves.
- Particularly prevalent in wet seasons.
- Severe symptoms resemble senescence with yellowing and necrosis of foliage giving a blighted appearance.

*\*Images courtesy of G. Higgins via UMASS.*



## USE RATE & TIMINGS

Apply 0.8kg/ha Clayton Creed® as the crop canopy closes over.

Continue to apply a sequence of different modes of action at 14–21 day intervals.

For late season disease control and on strawed crops, bolster Sclerotinia control with 0.8kg/ha Clayton Creed®. Partner fungicides will be required where Crown rot risk is high.

NB: FRAC guidelines: no more than two applications of a QoI or SDHI containing product in a 5 spray programme.