



NEW product launches for spring 2023...

**CLAYTON
FLURRY®**

EC formulation
200g/l fluroxypyr

H

**CLAYTON
COCOON®**

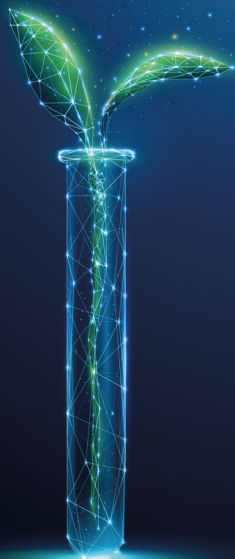
EC formulation
400g/l clopyralid

H

**CLAYTON
RALLY CX®**

WSG formulation
200g/kg metsulfuron-methyl

H



...and an exciting future development pipeline

With a generic portfolio set to double in the next two years, our range of high performance products is expanding rapidly!

www.claytonpp.com

Clayton Flurry®

200g/l fluroxypyr EC

A post emergence herbicide for the control of a range of broad-leaved weeds in winter and spring cereals, grassland and forage and grain maize. *Weeds controlled include cleavers, common chickweed, forget-me-not, charlock, common poppy, groundsel, mayweed, shepherd's purse, volunteer rape, knotgrass, black bindweed, broad-leaved dock and common nettle.*

Use rates and timings:

Winter Wheat and Winter Barley: up to 0.75l/ha (Autumn applications) and 1l/ha (Spring applications) from 2 leaves to flag leaf sheath opening (GS12-47).

Winter Oats, Durum Wheat, Rye and Triticale: apply up to 1l/ha in the Spring from 2 leaves to 2nd node detectable (GS12-32).

Spring Wheat, Spring Barley and Spring Oats: up to 0.75l/ha from 2 leaves to before flag leaf sheath extending (GS12-41) (between 2 leaves and before 2nd node detectable (GS12-32) in Spring Oats).

Clayton Cocoon®

400g/l clopyralid EC

A post emergence herbicide for the control of a range of perennial and annual broad-leaved weeds in oilseed rape, sugar beet, grassland and a wide range of other crops. *Weed spectrum includes excellent control of thistles and volunteer potatoes.*

Use rates and timings:

Oilseed rape: up to 0.75l/ha (0.5l/ha max individual dose) before flower buds visible above the crop canopy.

Grassland: up to 0.5l/ha, 7 days before grazing.

Sugar Beet: up to 0.75l/ha (0.5l/ha max individual dose) before crops meet between the rows (GS39).

Clayton Rally CX®

200g/kg metsulfuron-methyl WSG

A spring applied herbicide with foliar and root activity for the control of a wide range of broad-leaved weeds in wheat, barley, oats, linseed, triticale and green cover on land not in crop production (e.g. set-aside).

Use rates and timings:

Winter cereals: one application of up to 30g/ha from 15th March to flag leaf fully unrolled (GS39).

Spring cereals: one application of up to 30g/ha from 1st April to flag leaf fully unrolled (GS39).

Green cover: for application only where a full green cover is established. One application per year of up to 30g/ha.